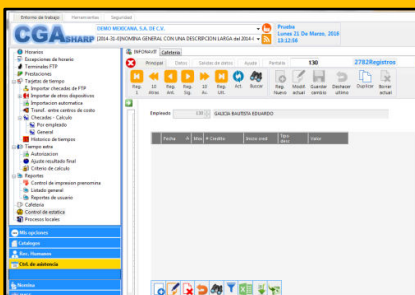


## Cafeteria Module



- ❖ **CONTROL OF DISHES SERVED BY TURN:** we locate a computer in the cafeteria and connect you a decoder, so that every employee, to go out to eat, present their gafette and is registered their consumption.
- ❖ **REFRESHMENTS SERVED AT THE STAFF THAT WORKS EXTRA TIME:** defined schedules which are considered consumption such as breakfasts, lunches and snacks, to identify the type of consumption.
- ❖ **DISCOUNTS TO EMPLOYEES BY PAYROLL:** should be free to meet with consideration on the law of the ISR indicating that you exempt consumption per meal to make, this module transfers a preset and minimum amount in pesos to deduce by payroll employee.
- ❖ **DEALER INVOICE:** Total Control of dishes served by date to pay the dealer.
- ❖ **REPORTS:** The module includes reports for each of these 4 entities sorted by employee and by date.



## Production and Efficiency Module

The importance of your company is important to contribute to their adaptation to technological and business changes without losing competitiveness and retaining human talent you already have.



For this purpose the production and efficiency of CGA module offers you:

**PRODUCTS:** The minimum unit to be controlled to quantify units, and efficiency. It may be a finished product or a subassembly. In this part the production standard is captured by time.

**INCENTIVES:** Table that allows to capture by ranges, an amount different from pay as a bonus production, depending on the efficiency achieved in the period by employee.

**EMPLOYEES:** The module accesses data from employees in the human resources module.

**HOURS WORKED:** The module accesses the hours processed by the module of control of assistance.

**QUANTITIES PRODUCES:** Option to capture daily quantities produced per unit of Assembly, related to the employee.

**LOST TIMES:** Option to capture the times that was not working for reasons unrelated to the employee. Routines that calculated efficiency considered these times and load it to the efficiency of the plant and not the employee.



**REPORTS:** They present the produced units and efficiencies that are ordered by employee by supervisor, by cost center, Department, shift, etc. Includes report of bonds of production and transfer to payroll for payment module.

